

ST1100 Pan-European CBS-ABS with TCS

Introduction

As Honda's high-tech, high-quality European touring flagship, the ST1100 Pan-European CBS-ABS with TCS features a smooth and powerful 1,100cc V4 engine, the advanced braking control of the world's first Dual Combined Brake System (Dual-CBS). This is further integrated with the confidence-inspiring, slip-reducing response of fully computerised Antilock Brake (ABS) and Traction Control (TCS) systems to ensure a level of ease, comfort and riding confidence—over a wide range of weather conditions—not to be found in any other motorcycle.

The most well balanced GT on the market, the Pan stands out as being one of the safest machines ever built: in addition to the ABS electronic anti-lock braking system, it also offers combined and coupled Dual CBS braking as well as an exclusive anti-wheel spin TCS system. A unique sum of technology in the field of powered cycles, added to which there are the intrinsic features which

this bike has claimed for itself since its introduction: protection, comfort, range, versatility, sound road-holding. As far as the engine is concerned, the V4 which is fitted to this authentic GT meets no dissent over its power, its torque as well as its flexibility in day-to day use. Enough quality to make the ST the benchmark of its category ...

Introduced in 96 - Manufactured in Japan - TOURING





ST1100 Pan-European CBS-ABS with TCS

Colouring Concept

For the year 2000, the Pan-European CBS-ABS with TCS features the same two elegant colour schemes as its standard-issue sibling; a luscious new candy red that delights the eye with its deep, luxurious lustre, and a rich metallic blue carried over from the previous year that emphasises the ST's look of quality

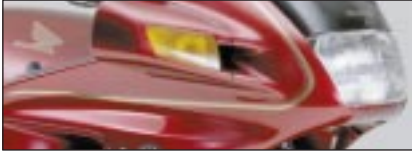
and high calibre in any setting. Both colour variations feature elegantly executed gold accent stripes and markings colour-coordinated with gold wheels that project an image of sleek agility, and rugged grey resin undercowls and pannier bottoms that stand up well against the ravages of the road.

Colours

- Candy Graceful Red
- Midi Blue Metallic



ST1100ABS - 20002 - E



ST1100 Pan-European CBS-ABS with TCS

Close-up

New Features

- New colour variation.
- New darker gold accent stripes and markings.

General Features

- Honda's electronic ABS prevents the wheels from locking when braking. This particularly sophisticated system proves very "transparent" for the rider who is hardly aware of its action.
- The Dual-CBS braking system operates under the combined action of three discs, each fitted with a three-piston calliper. The lever acts simultaneously on the outside pistons of the three callipers. The pedal operates the central piston of each calliper. Thus whatever mode the rider chooses, braking is ideally balanced.
- Using the same information as the ABS system, the TCS elec-

tronic system stops the rear wheel from spinning and thus skidding dangerously on a bend. It optimises acceleration and contributes to the rider's comfort, especially on a wet surface.

- The ABS-CBS-TCS combination makes the ST1100 a remarkably safe machine.
- Side guards protect the frame and bodywork in the event of a fall.
- The 16 valve V4 is water cooled. Originating from automotive technology, its has unrivalled reliability and only requires a minimum of maintenance. Very torquey and well rounded, it is exactly what a GT engine should be.
- The capacious shaped panniers are totally sealed and very easy to remove. They are colour-keyed to the machine.
- The universal joint shaft drive is an assurance of reliability and

peace of mind.

- Located under the saddle, the petrol tank lowers the centre of gravity significantly.
- The screen effectively protects the riders head and upper body. The air intakes in the cowl prevents the helmet from being disturbed by buffeting.
- A retractable lifting handle helps the Pan-European to be placed easily on its central stand.
- The instrument panel is sober, legible, fitted with a clock and manual headlamp-height adjustment which is very accessible. The fairing houses 2 glove-boxes (of which 1 is lockable).
- The ST1100 not only enjoys a two year warranty but also benefits from the quality of the Honda service network.



ST1100 Pan-European CBS-ABS with TCS

Colour Overview

1993



1994



ST1100ABS - 20004 - E



ST1100 Pan-European CBS-ABS with TCS

Colour Overview

1995



1996



ST1100ABS - 20005 - E



ST1100 Pan-European CBS-ABS with TCS

Colour Overview

1997



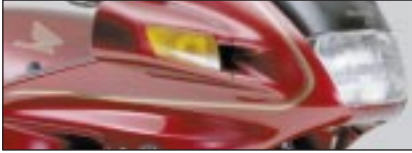
1998



1999



ST1100ABS - 20006 - E



ST1100 Pan-European CBS-ABS with TCS

Specifications

Specifications

ST1100 Pan-European CBS-ABS with TCS (ED-type)

| | |
|--------------------|---|
| Engine | Liquid-cooled 4-stroke 16-valve DOHC 90° V4 |
| Bore × Stroke | 73 × 64.8mm |
| Displacement | 1,084cm ³ |
| Compression Ratio | 10 : 1 |
| Carburettors | 34.5mm CV-type × 4 |
| Max. Power Output | 100PS/7,500rpm (DIN) (74kW/7,500min ⁻¹) |
| Max. Torque | 11.3kg-m/6,000rpm (DIN) (111Nm/6,000min ⁻¹) |
| Ignition | Computer-controlled digital transistorised with electronic advance and Traction Control System (TCS) |
| Starter | Electric |
| Transmission | 5-speed |
| Final Drive | Enclosed shaft with integrated dampers |
| Dimensions (L×W×H) | 2,285 × 935 × 1,405mm (with panniers) |
| Wheelbase | 1,555mm |
| Seat Height | 800mm |
| Ground Clearance | 145mm |
| Fuel Capacity | 28 litres |
| Wheels | Front/Rear Hollow-section triple-spoke cast aluminium |
| Tyres | Front 120/70-ZR18 Rear 160/70-ZR17 |
| Suspension | Front 43mm air-assist fork with TRAC, 150mm axle travel Rear Single-side conventional damper with adjustable pre-load and rebound, 120mm axle travel |
| Brakes | Front 296mm dual hydraulic disc with Combined three-piston callipers, ABS and sintered metal pads Rear 296mm hydraulic disc with Combined three-piston calliper, ABS and sintered metal pads |
| Dry Weight | 297kg |

All specifications are provisional and subject to change without notice.